

TRANSPORT

Key Facts on the Project's Transport and Accessibility Plan

With lithium concentrate and other products to be shipped from site, and supplies to be brought in, safe and efficient transportation will be a critical component of the Project. Savannah is committed to managing Project traffic to minimise its impact on local communities and the environment.

To ensure this, a detailed traffic study has been completed in line with the regulations on access options and their potential impacts. Based on this study a transport plan has been developed which ensures no trucks or Project related traffic will pass through the surrounding villages.

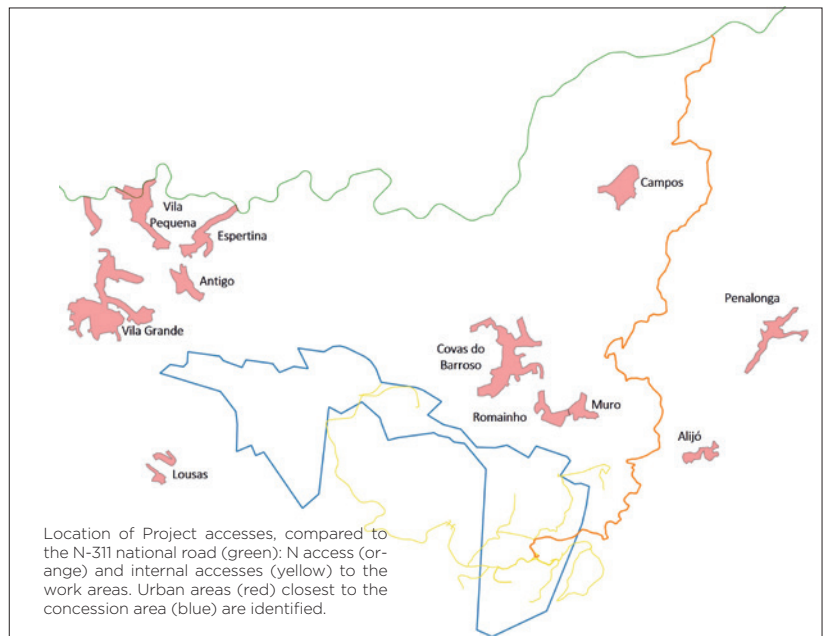
This factsheet provides a summary of the key elements of Savannah's Transport Plan for the Project.



Roads through local villages will not be affected by Project related traffic

1. Will transportation routes to and from the Project impact local communities?

- ▶ Access to the mine will be provided to the north of the Concession Area with a purpose-built 11.6km access road connecting the Project to the R311, bypassing all communities and not crossing any watercourses. Part of this road will be open to the public.
- ▶ To ensure that Project traffic and trucks do not pass through the townships of Boticas, Granja and Sapiãos a 17km bypass road will be built, starting west of Carreira da Lebre and connecting to the A24 highway.
- ▶ Truck movement to and from the Project will be kept to strict timetables to minimise impacts on local communities.



TIMES OF TRUCK MOVEMENTS AND NUMBER OF MOVEMENTS/HOUR

DAY	HOURS PERMITTED FOR PROJECT TRAFFIC ON EXTERNAL ROADS	NUMBER OF TRUCK MOVEMENTS (RETURN JOURNEYS/HR)
Monday - Friday	7.00am - 8.00pm	4
Saturday - Sunday	No road transport	0

2. Will trucks be arriving and leaving the Project all the time?

► No. The haul trucks to the highway along the bypass road will operate between 7am to 8pm on weekdays and will average 4 return truck movements per hour during this period. There will be no Project haul trucks driving on the bypass road at weekends.

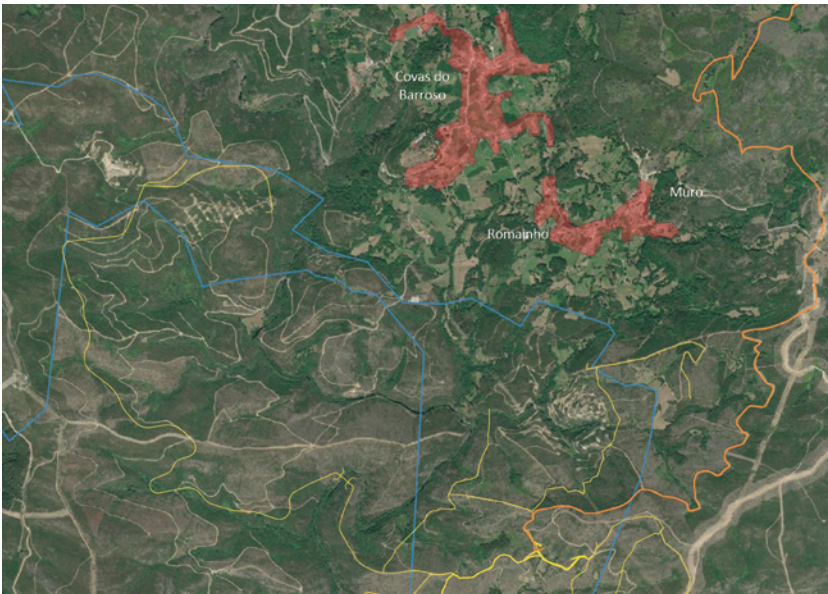
3. How will Savannah ensure the Project's transport is operated safely?

► Strict operating procedures, including driver training, will be implemented and Savannah will ensure that all relevant regulations are adhered to by its staff and its transport contractors.

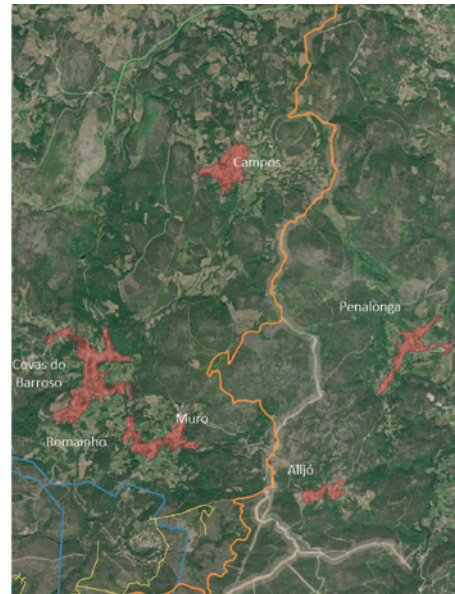


4. What will Savannah be doing to reduce the carbon footprint of Project-related road transport?

► As part of its overall decarbonisation strategy for the Project, Savannah has committed to targeting the reduction of its emissions which includes off-site transport of product and raw materials. Savannah expects to collaborate with its future contractors and customers on this goal. Solutions could include use of trucks fueled with biodiesel or electric trucks.



The project will feature 19.8km of internal roads within the concession area, which will connect to the new northern access road. Key: Internal roads (yellow); northern access road (orange); Concession area (blue); villages (red)



The 11.6km northern access road (orange) connecting the Project area to the R311 national road (green).

If you would like more information or have any questions or comments, please visit or contact the Barroso Lithium Project Information Centres

Information Centre Addresses:

Boticas: Rua 5 de Outubro, nº26 , 5460-304

Covas do Barroso: Largo do Cruzeiro nº7, 5460-381

T : 276 413 042

E: centro.informacao@savannahresources.pt

 Savannah Resources

 @SavannahRes



Scan with your phone for more information!